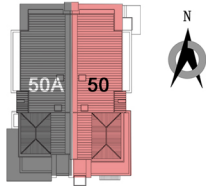


## 50 Grandview Terrace, Kew, 3101

Unit Type: 4 Bedrooms+ Study+ Home Cinema,  
3.5 Bathrooms, 2 Cars Garage



BASEMENT FLOOR

Basement Floor: 72m<sup>2</sup>  
Ground Floor: 125m<sup>2</sup>  
Garage: 45m<sup>2</sup>  
First Floor: 112m<sup>2</sup>  
Private Open Space: 181m<sup>2</sup>

**Total Internal Area: 354m<sup>2</sup>**

**Total Land Size 307m<sup>2</sup>**

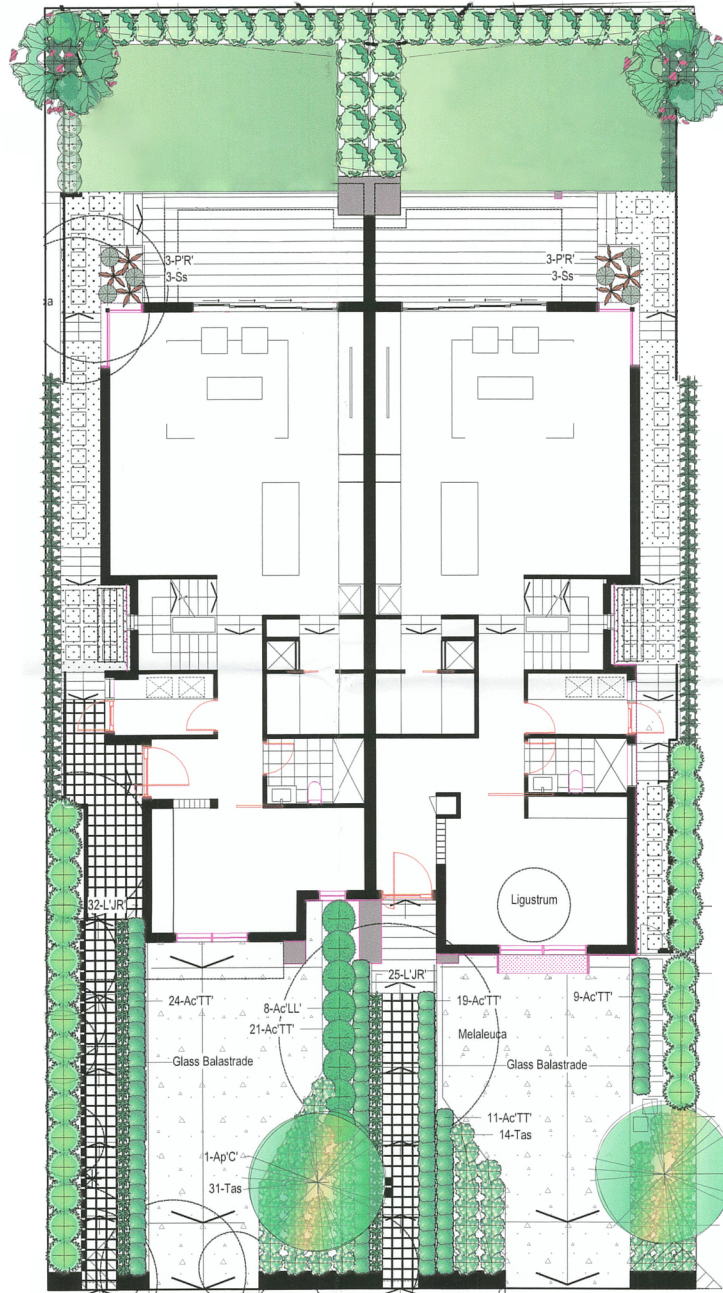


GROUND FLOOR



FIRST FLOOR

50A  
Land Size 307sqm  
Sold



50  
Land Size 307sqm  
Available